

We are building up a bank of images that we can use in our services, on our website and elsewhere, - images that reflect the Kiwi context of our life and faith. So we are launching the second...

### **TUC Great Summer Picture Show.**

The theme for the show comes from our Tawa Union Church Statement of Identity and Intent—'We are on a spiritual journey...'

There are three entry categories for the Picture Show:- Us (ie., any group of people showing togetherness), Spirit & Journey. The images can be serious, whimsical, humorous, challenging, or sublime. They do need to be suitable for use in a church setting.

The photos will be on display at the church in early March. There will be a modest prize awarded for the best photo in each of the three categories, as well as one for the best photo by someone aged 12 or under.

Anyone who has a connection with Tawa Union Church, even if it is a loose one, is eligible to enter.

### **Rules**

- Photos need to be taken on a digital camera.
- A standard sized print and a digital copy (either on CD or USB flash drive) need to accompany each entry.
- *You must put your name on the CD or flashdrive, and your name and the photo title on the back of the print*
- Your flashdrive/CD will be available to be collected from the Church by the end of February.  
The Church Office hours are:  
Tuesday to Friday, 9am – 12.30pm.  
If you cannot collect your flashdrive please include a stamped self-addressed envelope so that it can be returned to you.
- The prints will remain the property of Tawa Union Church.
- No more than two photos per person.
- All entries need to be in by Sunday 12<sup>th</sup> of February 2012.

### **Entry Form**

**Name**

**Address**

**Contact Phone #**

**Photo Title 1**

**Category** (*circle one*)

Us      Spirit      Journey

**Photo Title 2**

**Category** (*circle one*)

Us      Spirit      Journey

**Tick** this box if you are 12 years old or younger

In entering this competition I understand that I am giving Tawa Union Church permission to use this photo/these photos publicly for display, worship and promotional purposes.

**Signature**

We are on a spiritual journey  
exploring our place in God, in  
the community, in creation.

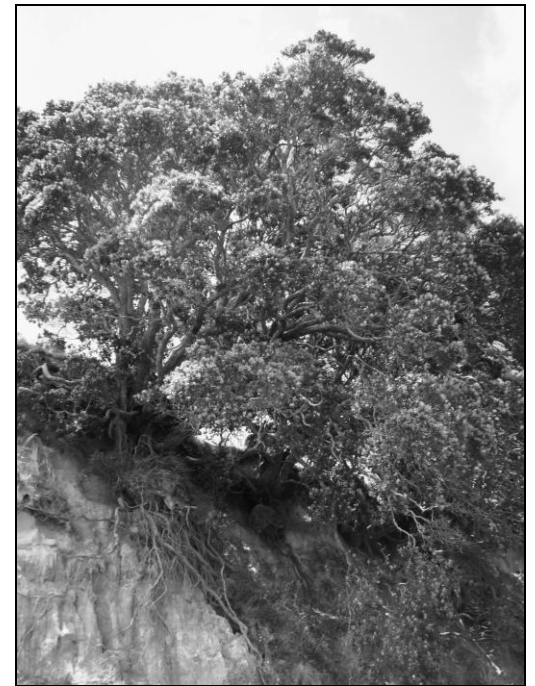
It's a journey that's  
unfolding; we don't claim to  
have arrived.

If you'd like to join us, there  
is space for you to come  
along.

*Statement of Identity and Intent  
Tawa Union Church*



# The TUC Great Summer Picture Show # 2



*Photo- Linda Medcalf*